



Assessment Report



x x x x x

x x x x x

x x x x x

x x x x x

About the Report

About MECAT

MECAT, conducted by the Media and Entertainment Skills Council, is India's largest aptitude test for admissions to various programs in the Media & Entertainment Sector, including animation, visual effects, gaming, and filmmaking. It is widely accepted by numerous universities, colleges, and training institutes across the country. MECAT serves as a standardized test to assess a candidate's creativity, aptitude, and readiness to pursue a career in the Media & Entertainment Sector.

Understanding the Report

To assist individuals in identifying the best career options available, it is crucial to possess comprehensive knowledge about their aptitudes, skill orientations, and behavioural abilities. Advanced technological innovations are utilized for this purpose, ensuring accurate and complete results regarding individuals' skills, aptitudes, and behavioural abilities. You have successfully completed a scientifically proven assessment test based on the aforementioned criteria. The following pages will present you with a detailed report based on your assessment, which will guide you towards your career path. It is advised to review the report attentively as it will provide valuable insights.

Report Structure

This report is divided into three sections to provide a comprehensive analysis:

Part 1 - Personality: This section focuses on understanding your core personality and associated behaviours. It covers various aspects such as your strengths, weaknesses, decision-making patterns, interpersonal relationship patterns, and communication style. By exploring these aspects, you can gain insights into your personality traits and how they influence your career choices.

Part 2 - Multiple Intelligence Orientation: This section utilizes the MIO assessment to help you identify your different orientations to intelligences. It serves as an indicator of your interests and preferences regarding various skill sets. Understanding your multiple intelligence orientations can guide you towards career paths that align with your strengths and areas of interest.

Part 3 - Suitable Media and Entertainment Career Segments (Career Families): Fitment, or the suitability of a career, is the central focus of this section. Here, you will discover the fitment percentage for each Media and Entertainment career option based on your assessment. A higher fitment percentage indicates a greater likelihood of success in a specific Career Segment. Furthermore, this section provides an overview of different careers available within each Media and Entertainment Career Segment, helping you explore potential avenues in the Media and Entertainment industry.

Note: This report is based solely on the responses you provided during the assessment and does not take into account your educational background or qualifications. Instead, it offers valuable insights into your aptitudes, expertise, behavioural abilities, and more.







Part 1

Personality Report

Your Core Behaviour

Below is a measure of your Behavioural Ability. As the percentage increases, the expression of the characteristics of each style can be considered to increase.

Degree of Influence			
Methodical, Analytical, Organized, Detail Orientation	Practical, Challenging, Hard- driving, Competitive	Creative, Original, Imaginative, Inventive	Team Player, Helpful, Willing to adapt, Caring
			
93.75%	37.5%	72.5%	46.25%

Understanding yourself

Your general behavior is as follows:

You are a blend of systems and ideas, generally very organised and analytical towards life with original ideas.



You are organized and methodical in everything you do, leaving little room for any mistake in your life.



You analyze a problem and bring in logical explanation backed by examples.



You are a perfectionist who sets high standards, consciously detailing your schedules.



You are deeply thoughtful and analytical in dealing with purposeful and serious issues.



You are philosophical in nature, yet can be creative and artistically talented.

Your Career Strengths

Your career strengths are as follows:

Career Strength	Need focus	Progressing	Blooming	Advancing	Master
Quick in building relations and efficiently maintains them.		📍			
Details are carefully considered and accurate.					📍
Creative and easily innovative.				📍	
Capable of creating structure out of chaos and confusion.					📍
Enjoys adventure and may take risks in accepting most opportunities.	📍				
Ability to work in Teams.		📍			
Enjoys challenges and does not easily bend down to pressures.	📍				
Open and flexible to changes.				📍	
Quick in action and prefers quick results.	📍				
Always analyses oneself to correct past mistakes and advance further each time.					📍



Your associated weakness

You have a tendency to focus on the negative aspects of any situation. This might keep you self-centered.

You prefer detailed analysis to perform your task which can make you hesitate to start new projects.

You might be a perfectionist and have a tendency to set goals beyond your reach.

You can be rigid in situations demanding great level of accuracy.

Notes

Being good at logically processing things and your interest in research work might help you shine in places where you are to gather and process data.

Your Communication Pattern

You prefer to communicate with the world in the following ways:

Communication Pattern	Need focus	Progressing	Blooming	Advancing	Master
Expresses emotional concern and care for the well-being of others.		📍			
Speaks and encourages visions for long-term plans and advancements.				📍	
To be a notable voice, may take over the conversations dominating the talk.	📍				
Provides precise and crisp explanations and instructions.					📍
Direct and defined speech.	📍				
Openly expresses thoughts and feelings.		📍			
May follow a structure and method while conversing.					📍
Overall goals and objectives are given more importance.				📍	
Friendly and free type of behavior to others.		📍			
Interested in finding out the reasons or causes of things.				📍	



Your mind is constantly thinking and searching for ideas as you do not enjoy being idle and always want to be productive.



You tend to focus on the real-time scenario and are sharp eyed enough to take practical decisions which are deemed to be beneficial for everyone.



How you take decisions



You are highly self-critical due to your inability to meet the high expectations you have set for yourself. Hence, you are constantly striving towards attaining your expected results.



Your ability to analyze allows you to accurately diagnose obstacles and conflicts which can keep you from making errors.



Your interpersonal pattern

This is how you deal with people around you.

You may get easily discouraged and can also be susceptible to fear and anxiety which can make you uncooperative, stubborn and rigid.



You find interpersonal relationships difficult due to your hard-to-please nature and perfectionist attitude.



You desire independence and autonomy for yourself, but also require a controlled and organized work environment.



You require reassurance about your performance, what is expected of you, and prefer exact work descriptions, expectations and goals to be laid out.



How others view you

Based on your personality, this is how others view you.

People may view you as a gloomy and introverted personality, but the inventor in you can turn the tables around regarding this perspective.



You are viewed as a person who showcases verbal mastery with sharp attention to detail.

You are a practical and fact-dependent individual whose reliability cannot be doubted.



You will be viewed as the most dependable person in your circle due to your tendency to attain impossible perfection.





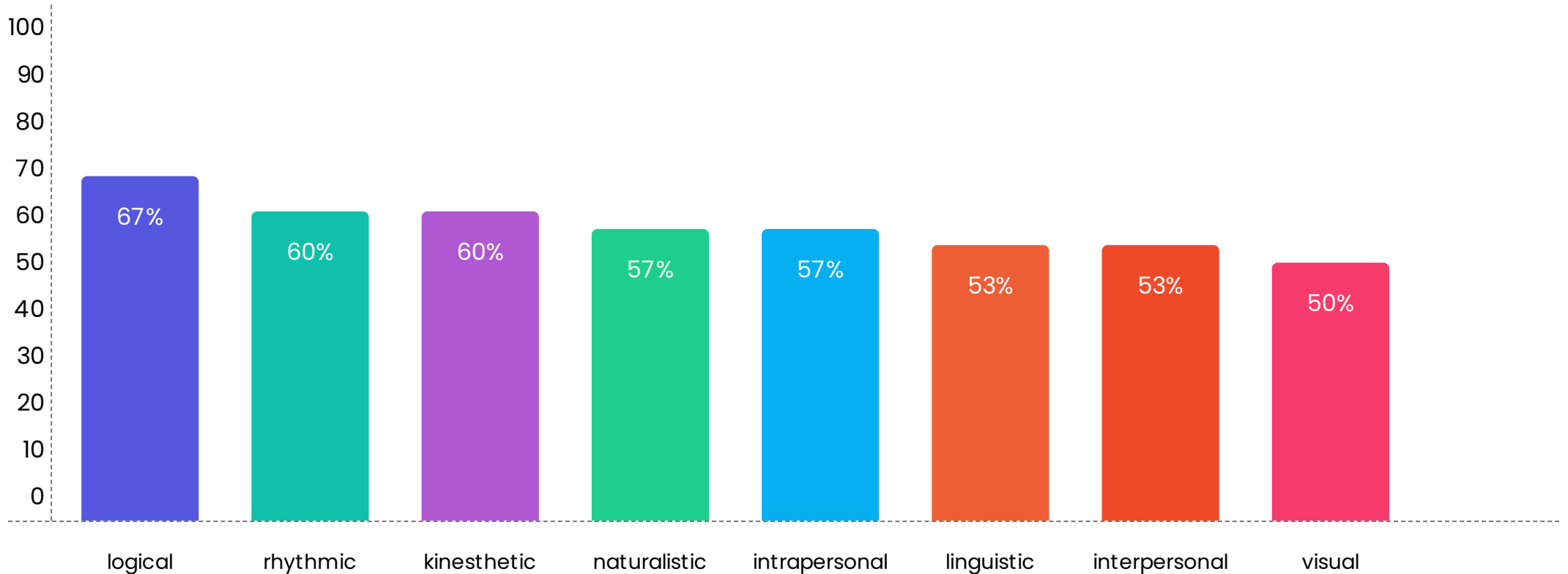
Part 2

Multiple Intelligence Orientation Report

Multiple Intelligence Orientation

The Multiple Intelligence Orientation test is an assessment based on the influential Multiple Intelligences theory by Howard Gardner. Each individual possess numerous intelligences in varying degrees. These intelligences can be nurtured to increase the quality of life and have strong ramifications in the classroom. It bridges the gap between your intelligences and career choice.

This test renders a new way of looking at your life, suggesting several ways in which you can apply your strengths and potentials.



Spread of Skills

Based on your Multiple Intelligence Orientations you are gifted with the following strengths.

Visual Smart



People who are able to visualise information by creating a mental model. They like to view and observe everything before taking action.

Body Smart



Body smart are people who use physical skills such as balance, strength, flexibility, speed etc. They tend to be active, often like to work with their hand.

Nature Smart



Nature smart individuals tend to nurture and relate information from their natural surroundings. They have a knack for identifying plants and animals.

People Smart



People smart individuals are able to respond to the emotions of others. They are gifted at establishing rapport with strangers and make friends easily.

Word Smart



People who display strengths in speaking, writing and reading and have strength in acquiring languages. Their auditory skills are very well developed.

Self Smart



It is the ability to decipher and analyse your individual motives, desires thoughts and emotions. Self smart people have an innate ability to know oneself.

Logic Smart



Logic Smart people display an aptitude for numbers, reasoning and problem solving. Good at critical thinking and have well developed reasoning abilities.

Music Smart



Music Smart is the ability to perceive, transform and express musical forms. They tend to love music and rhythmic sounds.

Orientation detail

More about your multiple intelligence orientation

Logic Smart

You may be good at creating codes and formulas as you may like the challenge of a complex problem

You may enjoy learning by solving puzzles, logical games and investigations.

You may follow an organized and systematic approach towards learning.

You are likely to be more inclined towards science subjects and can easily remember dates.

Body Smart

You may like to work through problems while engaging in a physical activity.

In a conflict, you may prefer to rely on your instincts and follow your gut feelings.

You may learn best through movement and experimentation, exploring independently with objects or tasks instead of listening to information.

Music Smart

You can develop your ability to create melodies and play several musical instruments.

You are sensitive to the sounds around you.

You seem to get the beats right and have a good sense of rhythm

You may have the ability to identify musical notes and tones.

Nature Smart

You may try to collect specimens from nature and keep them as souvenirs.

You may display a sense of surprise or express wonder at the various natural phenomena.

You seem to be interested in engaging in outdoor classes and prefer to learn about nature.

Self Smart

You are likely to be constantly analyzing yourself, trying to understand your role in relation to others and in the larger scheme of things.

You may be focused on becoming more aware of yourself and comfortable with your needs and interests.

You may probably prefer to work alone and may appear to be shy.

People Smart

You are likely to be good at socializing, meeting new people and seem to learn better through group activities, seminars, dialogues etc.

You may have socializing skills but may prefer mostly to be amongst those people you feel comfortable with.

Your desire for peaceful conflict resolution may help you deal calmly with others.

Word Smart

You may have the ability to handle language well, communicating easily with others.

You may easily remember quotes and famous sayings and may have the capacity to use language well.

You may show an interest in learning new languages.

You may show interest in reading books, playing word games and writing poetry and stories.

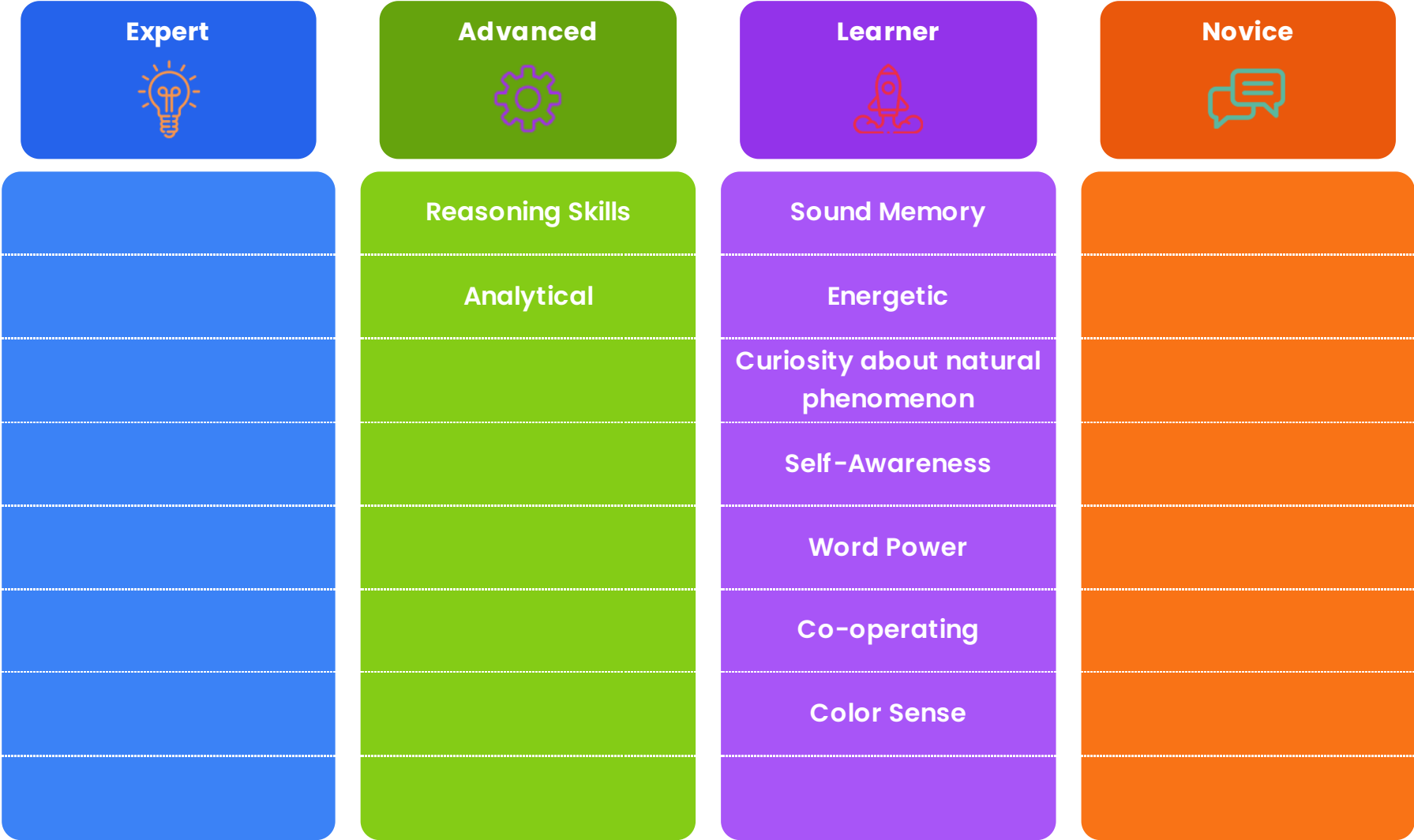
Visual Smart

You seem to be inclined towards visual images. This enables you to easily remember faces even though you might struggle to remember names.

You seem to prefer to take notes, learn from graphical representations and visual aids.

You may have a preference for designing, drawing, and painting.

Spread of Skills





Part 3

Media and Entertainment Career Fitment

Career Fitment Graph

Based on your assessment scores, shown below is your Career fitment Graph



Media Profession

56% fit

Based on your assessment, your overall Fitment towards Media and Entertainment Careers is 56 %

Within the Media and Entertainment Careers domain, there are several subsegments that offer various opportunities. Here is a list of careers within these subsegments along with their fitment percentages. Reviewing this information will assist you in making more informed decisions regarding your choice of careers in the Media and Entertainment industry:



Gaming and AR/VR

67% fit



Digital Marketing and Advertising

62% fit



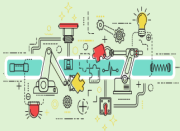
Human Resource & Coordination

61% fit



Sound and Music

58% fit



Events Management

54% fit



Animation

53% fit



Film Making

53% fit



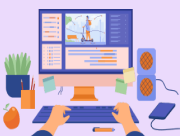
VFX and Editing

53% fit



Art & Design

47% fit



Journalism & Mass Communication

46% fit



Marketing and distribution

43% fit



Performing Arts

42% fit

Summary and Conclusion

We trust that this report has provided you with valuable insights into your aptitudes, skill orientations, and behavioural abilities.

It is important to note that this report is solely based on the responses you provided during the assessment, and it aims to assist you in discovering the most suitable career options for your future.

The Media and Entertainment Council wishes you a fulfilling and successful life, as well as a rewarding career journey.

We hope that the information presented in this report will guide you towards making informed decisions and embarking on a path that aligns with your strengths and interests.

Thank you for undertaking the assessment, and we extend our best wishes for your future endeavours.

MECAT

MEDIA AND ENTERTAINMENT
CREATIVE APTITUDE TEST